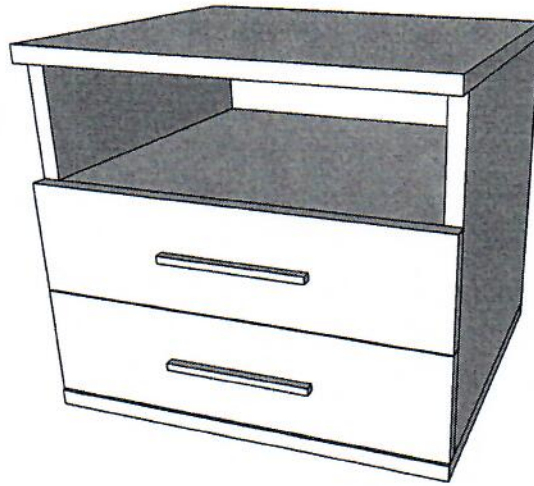


MONTÁŽNY

Assembly instructions

SN20



návod

- Pozorne si prečítajte montážny návod
- Vybalte z krabíc jednotlivé elementy a prekontrolujte ich obsah
- Zmontujte vybalené elementy podľa návodu
- Montážny návod dobre uschovajte
- Nepoužívajte na čistenie chemikálie a abrazívne prostriedky!



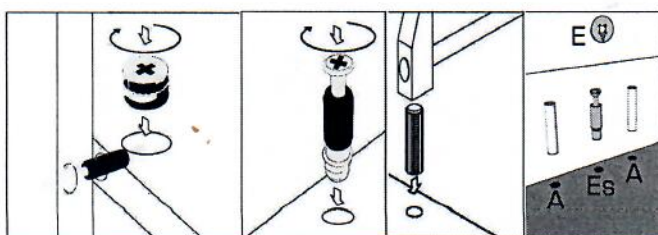
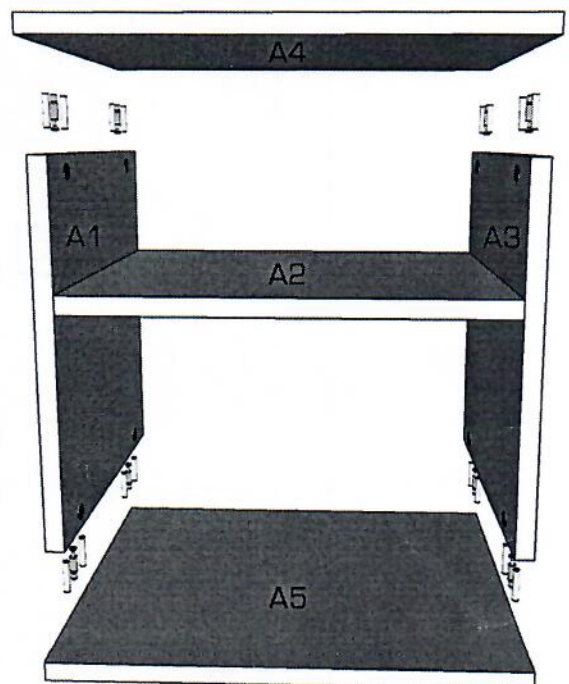
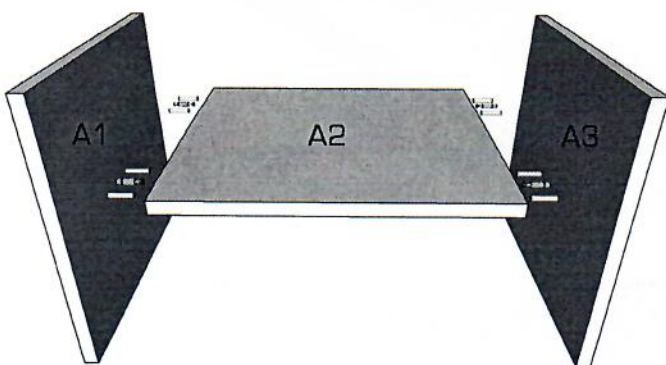
- Read the assembly instructions carefully
- Unfold the individual elements from boxes and check their contents
- Assembly unfolded elements according to the instructions
- Keep the assembly instructions well
- Do not use chemicals and abrasive cleaners!



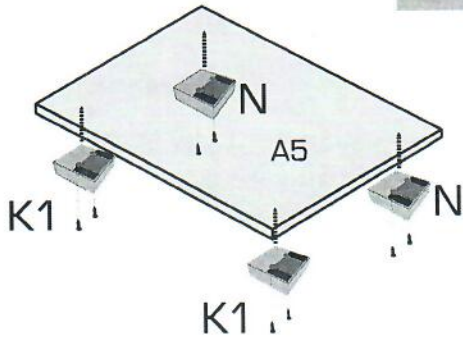
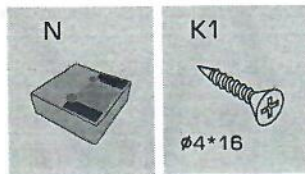
1.



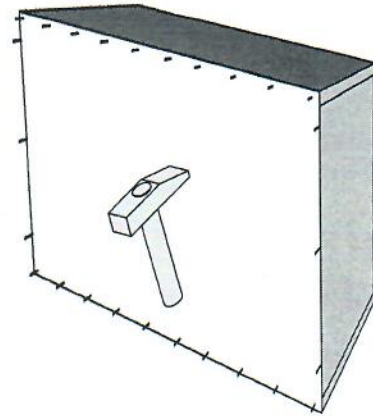
2.



3. Na dno skrinky A5 priskrutkujte klzáky.



4. Diely B1 a B2 spojte excentrom.



5.



1. METABOX
2. upevnenie čela

