

MONTÁŽNY

Assembly instructions

OT-4

OT-5



návod

- Pozorne si prečítajte montážny návod
- Vybalte z krabíc jednotlivé elementy a prekontrolujte ich obsah
- Zmontujte vybalené elementy podľa návodu
- Montážny návod dobre uschovajte



- **Nepoužívajte na čistenie chemikálie a abrazívne prostriedky!**

- Read the assembly instructions carefully
- Unfold the individual elements from boxes and check their contents
- Assemble unfolded elements according to the instructions
- Keep the assembly instructions well

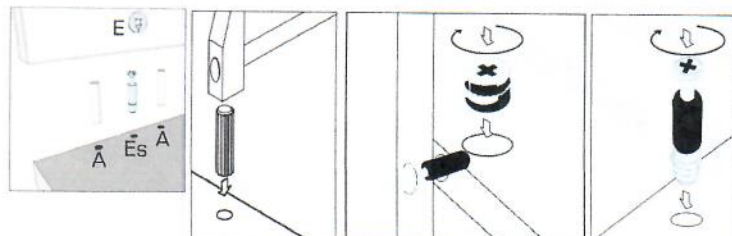
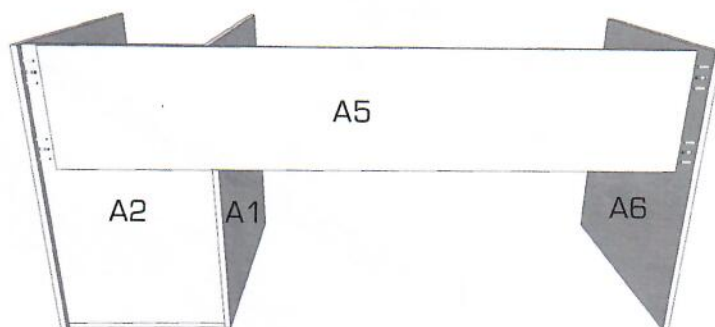
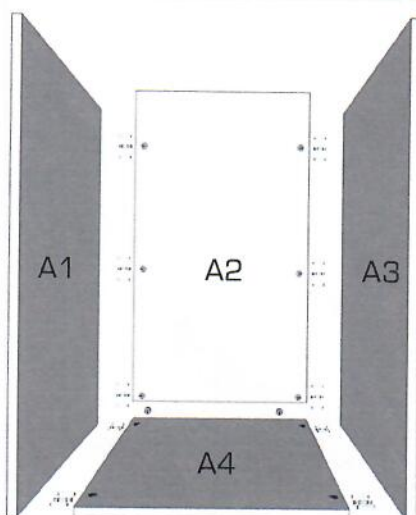


- **Do not use chemicals and abrasive cleaners!**

1.



2.

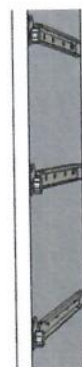
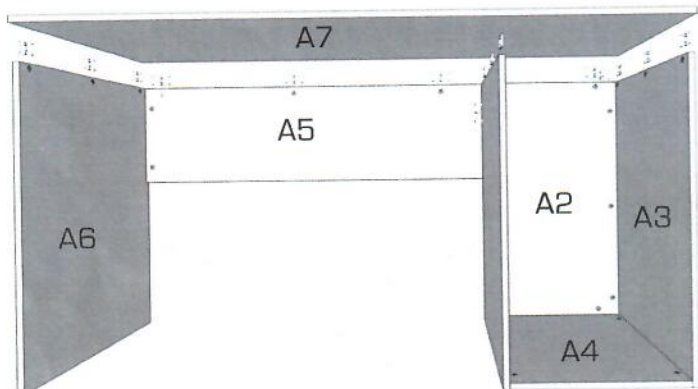


3.

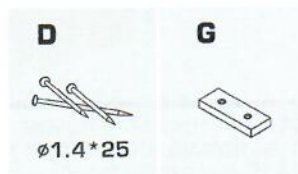
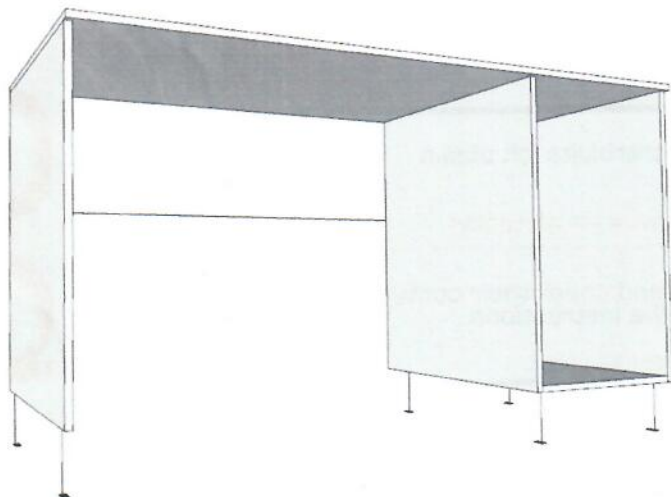


4.

Na diely A1,A3 namontujte lišty metaboxu.



5.



6.

KM x 56



1. METABOX
2. upevnenie čela

