

# MONTÁŽNY

Assembly instructions

OS3



návod

- Pozorne si prečítajte montážny návod
- Vybalte z krabíc jednotlivé elementy a prekontrolujte ich obsah
- Zmontujte vybalené elementy podľa návodu
- Montážny návod dobre uschovajte

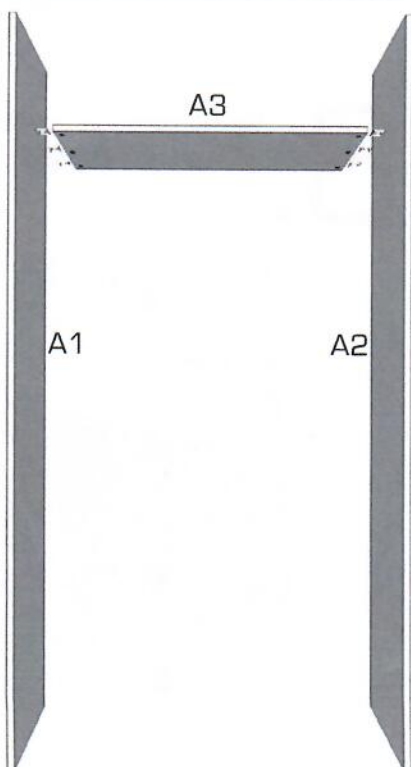
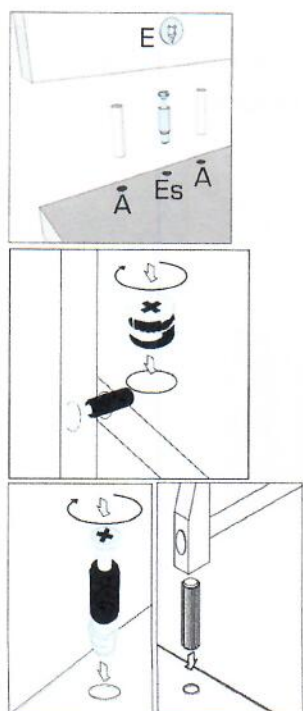


- Read the assembly instructions carefully
- Unfold the individual elements from boxes and check their contents
- Assemble unfolded elements according to the instructions
- Keep the assembly instructions well

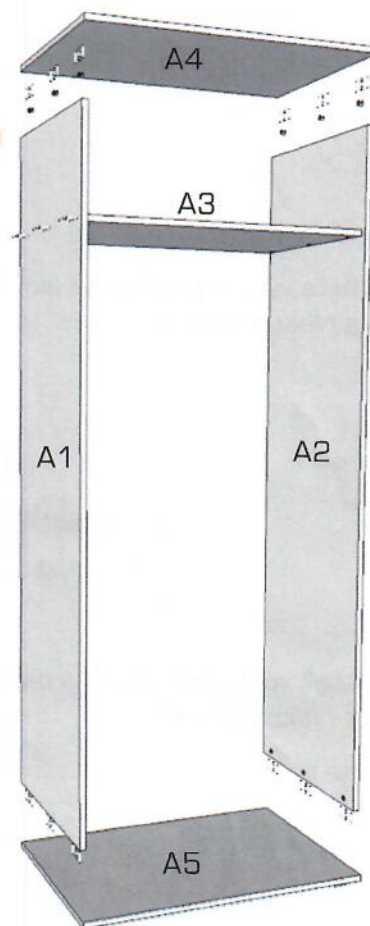


- **Do not use chemicals and abrasive cleaners!**

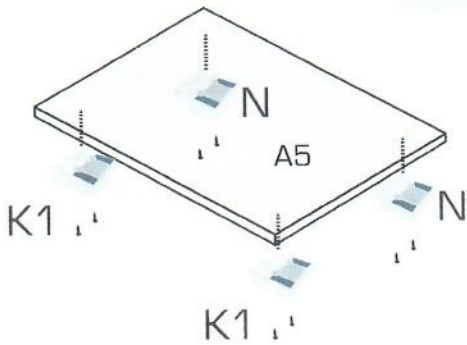
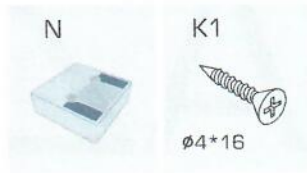
1.



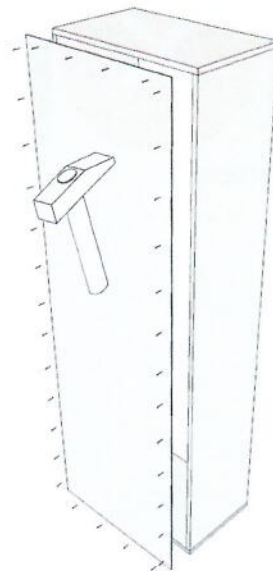
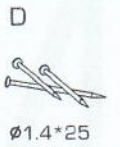
2.



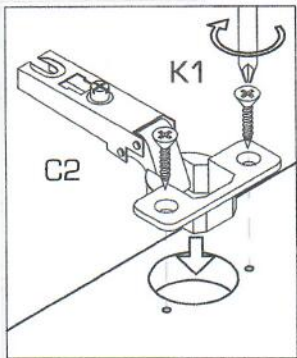
**3.** Na dno skrinky A5 priskrutkujte klzáky.



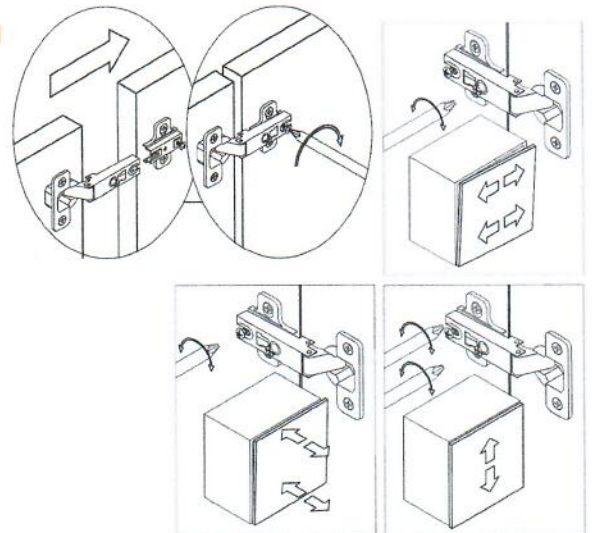
**4.** Pomocou klincov pripevnite zadný diel.



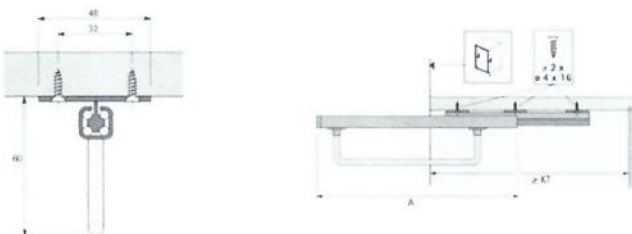
**5.** Na dverka namontujte závesy C2 a na skrinku (diely A1 a A3) podložky C1.



**6.** Dverka namontujte a nastavte podľa obrázku.



**7.** Namontujte výsuvný vešiak na diel A3 (skriňa s hĺbkou 40cm) alebo držiak vešiakovej tyče na diely A1 a A2 (skriňa s hĺbkou 60cm).



alebo držiak vešiakovej tyče na diely A1 a A2 (skriňa s hĺbkou 60cm).



**8.** Do otvorov na dieloch A1 a A2 vložte podperky na ktoré umiestnite police.

