

MONTÁŽNY

Assembly instructions

OS1



návod

- Pozorne si prečítajte montážny návod
- Vybalte z krabíc jednotlivé elementy a prekontrolujte ich obsah
- Zmontujte vybalené elementy podľa návodu
- Montážny návod dobre uschovajte



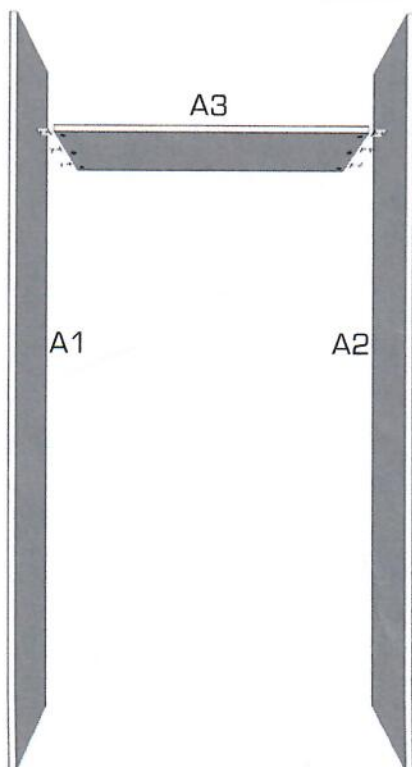
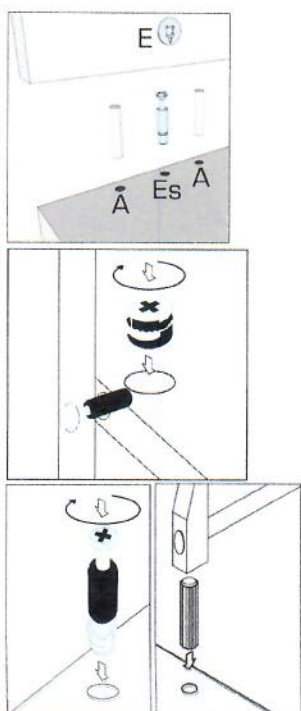
- **Nepoužívajte na čistenie chemikálie a abrazívne prostriedky!**

- Read the assembly instructions carefully
- Unfold the individual elements from boxes and check their contents
- Assemble unfolded elements according to the instructions
- Keep the assembly instructions well

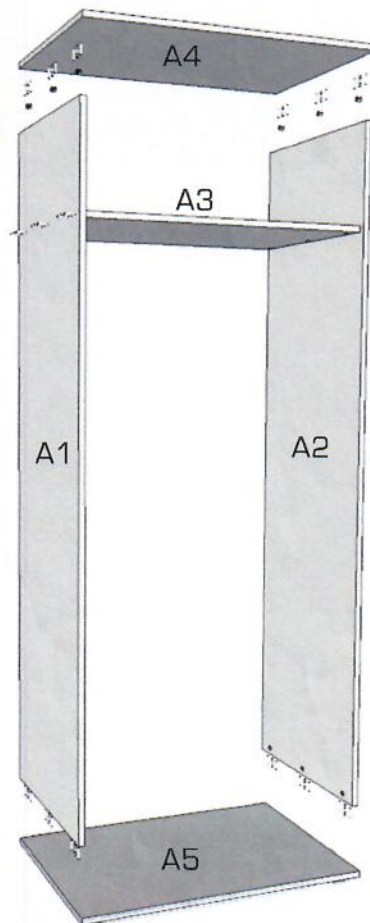


- **Do not use chemicals and abrasive cleaners!**

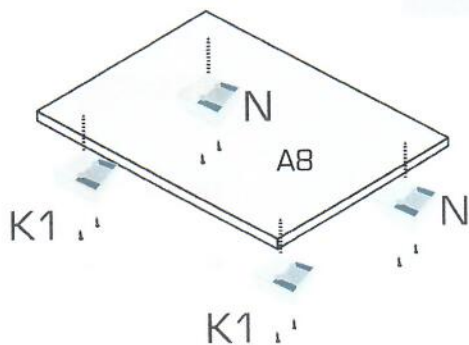
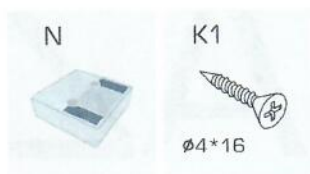
1.



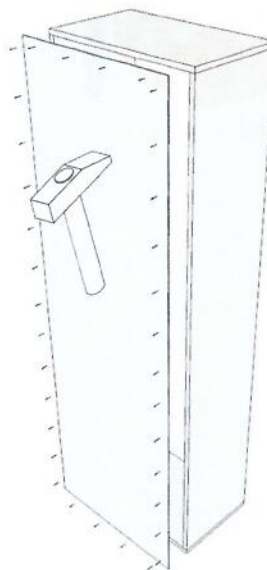
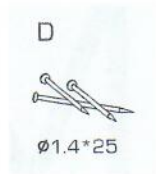
2.



3. Na dno skrinky A8 priskrutkujte klzáky.



4. Na zadnú stranu pripevnite pomocou klincov zadný diel.



5. Do otvorov na dieloch A1 a A2 vložte podperky na ktoré umiestnite police.

