

MONTÁŽNY

Assembly instructions

HETTI-2

- Pozorne si prečítajte montážny návod
- Vybalte z krabíc jednotlivé elementy a prekontrolujte ich obsah
- Zmontujte vybalené elementy podľa návodu
- Montážny návod dobre uschovajte

- **Nepoužívajte na čistenie chemikálie a abrazívne prostriedky!**

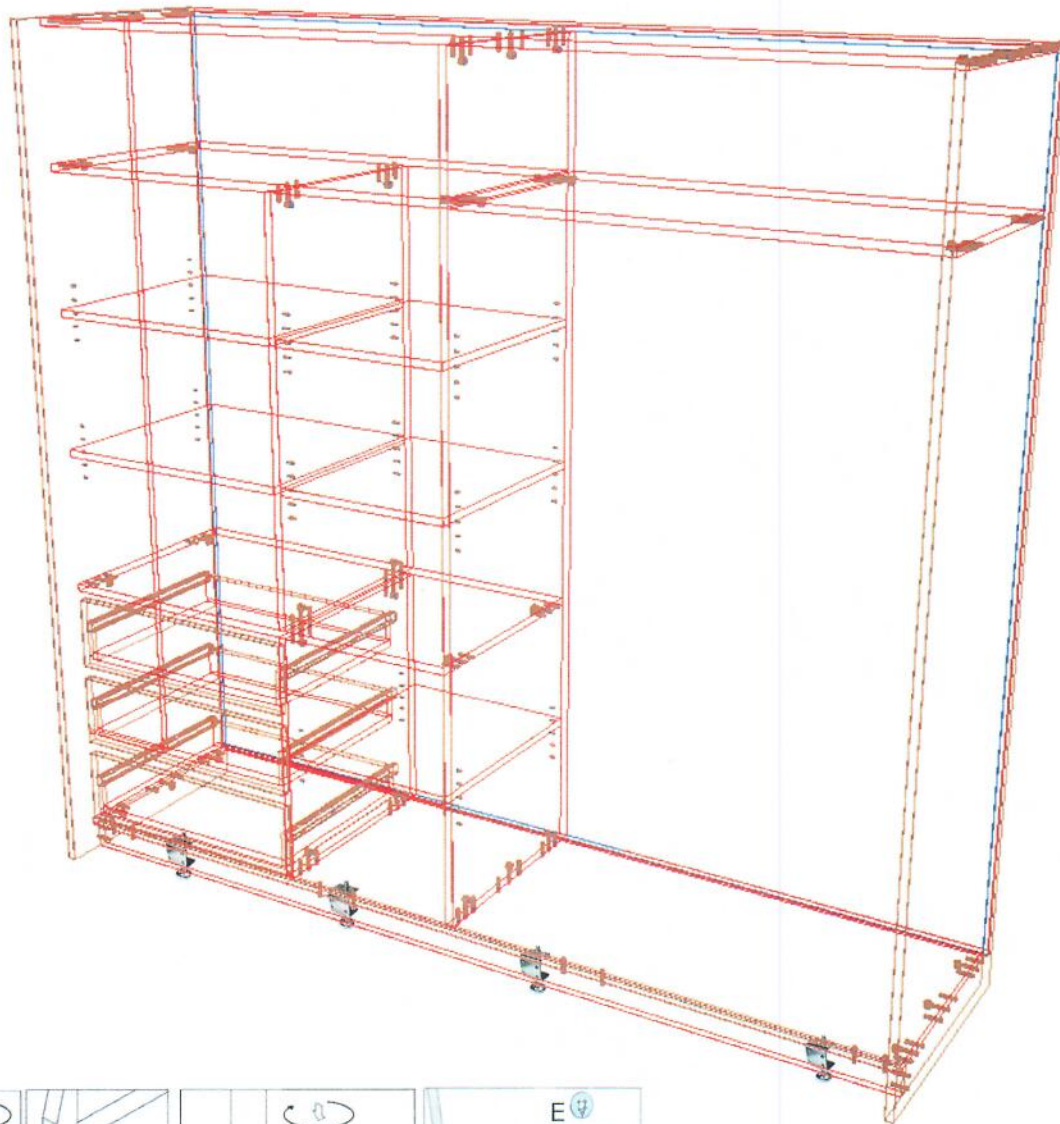


- Read the assembly instructions carefully
- Unfold the individual elements from boxes and check their contents
- Assemble unfolded elements according to the instructions
- Keep the assembly instructions well

- **Do not use chemicals and abrasive cleaners!**



1.



návod

E



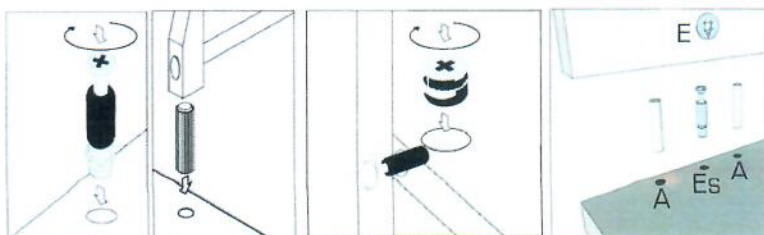
Es

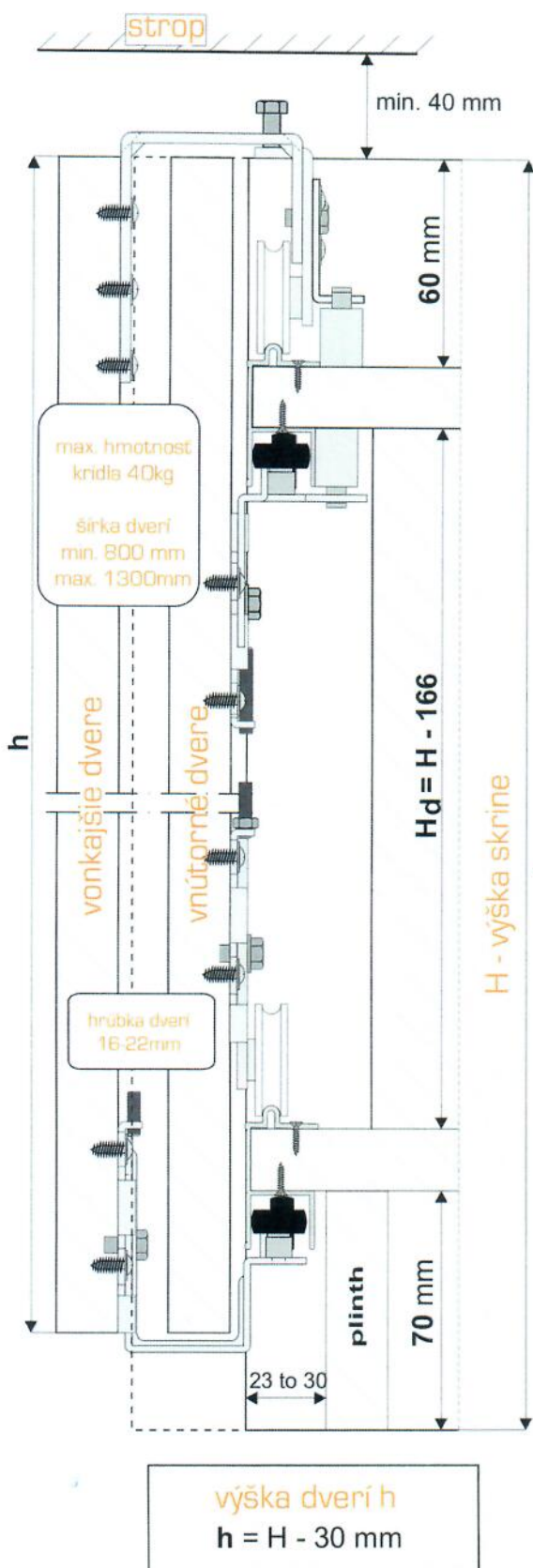


A

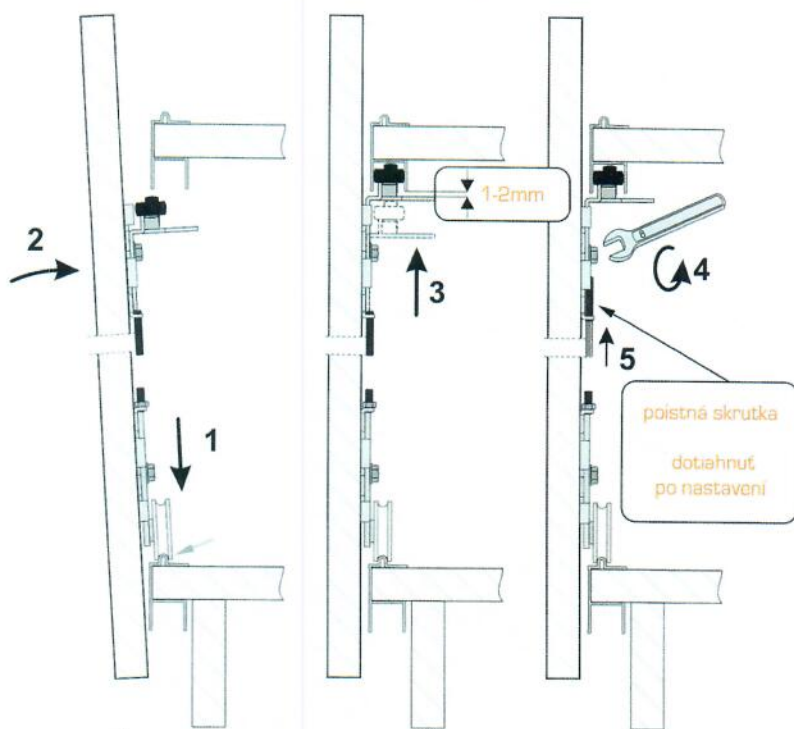


ø8*35

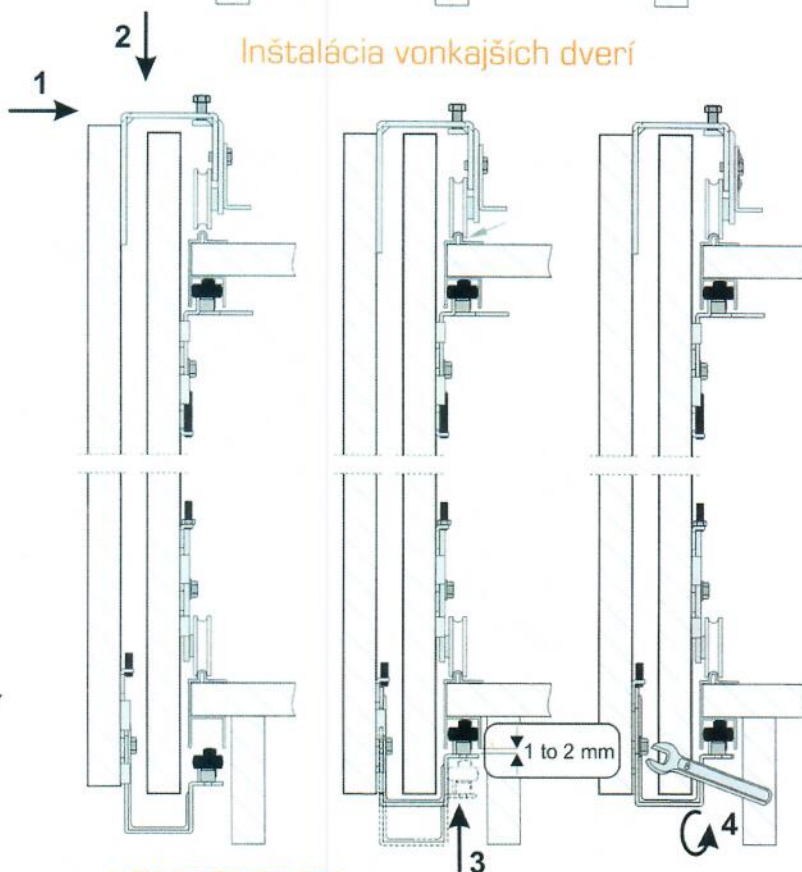




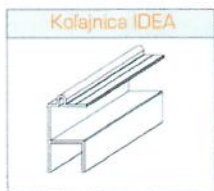
Inštalácia vnútorných dverí













Inštalácia vonkajších dverí



KOMPONENTY



							skrutka 4x16	x 38 pcs	
x2	x2	x2	x2	x2	x2	x4	skrutka 3.5x30	x 8 pcs	
							skrutka M4x6	x 4 pcs	

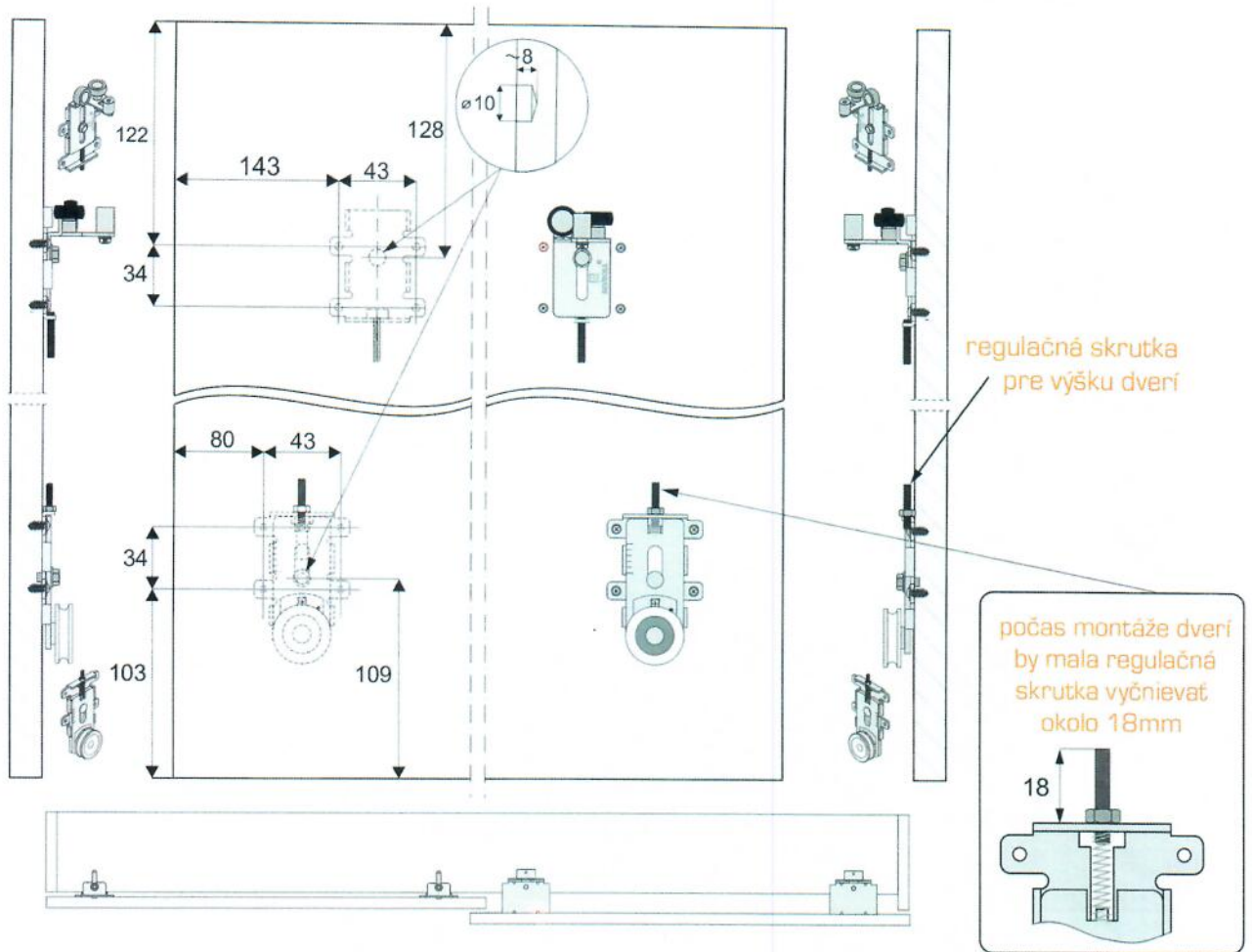
Topná kolieska pre vonkajšie dvere

Spodná kolieska pre vonkajšie dvere

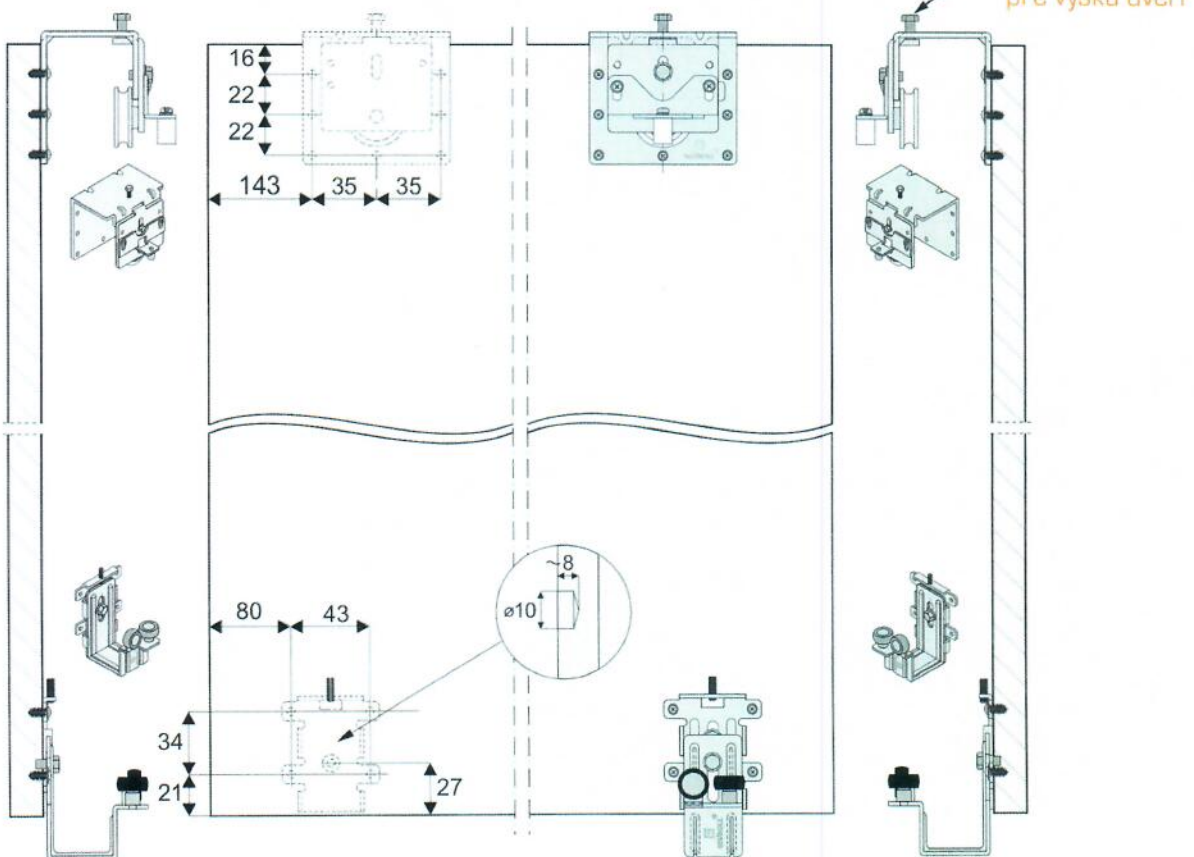
Topná kolieska pre vnútorné dvere

Spodná kolieska pre vnútorné dvere

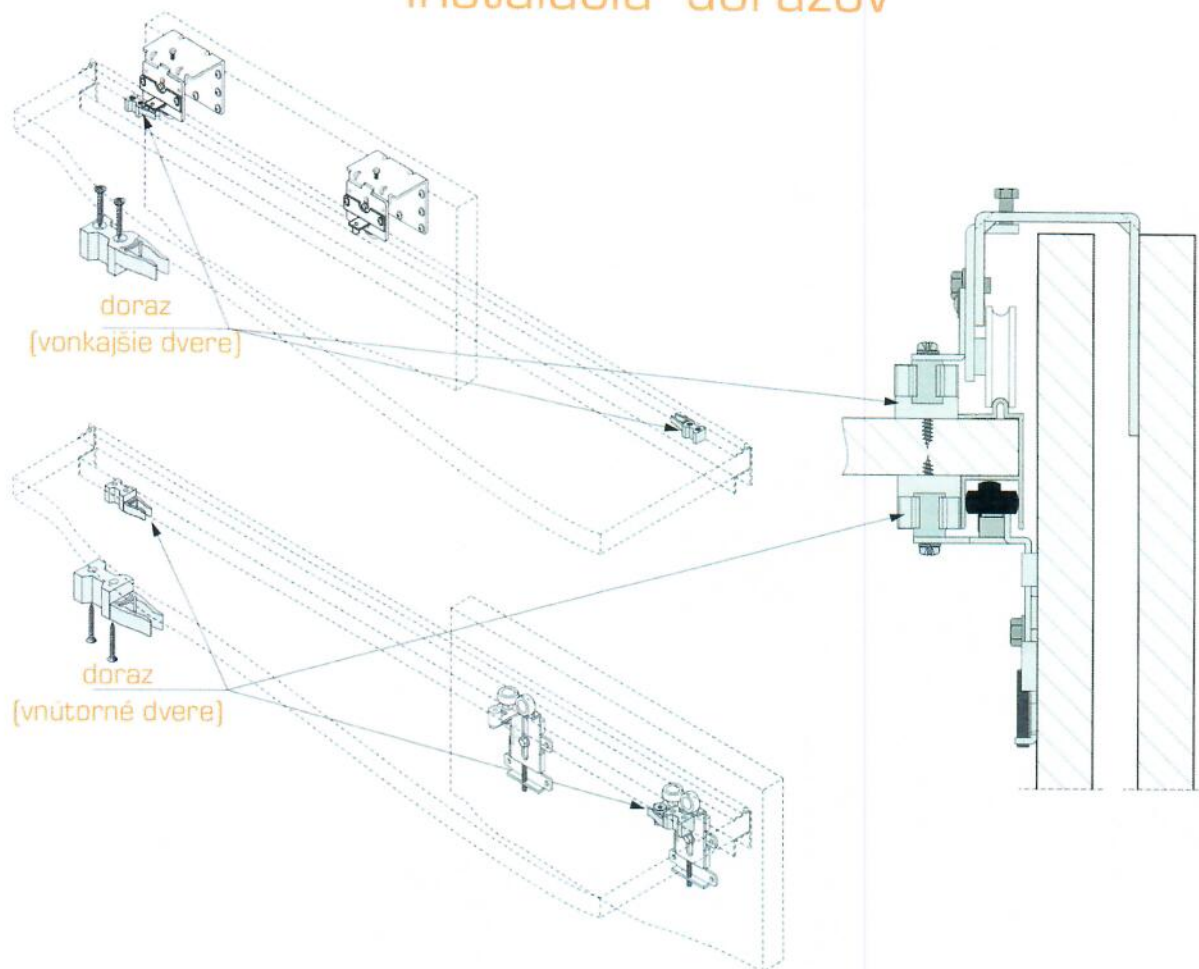
Inštalácia vnútorných dverí



Inštalácia vonkajších dverí



Inštalácia dorazov



Inštalácia spomaľovačov

